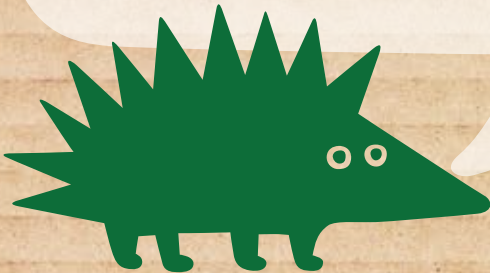


# WOODCRAFT TIMES

Welcome to our Newsletter!

Dear Members and Parents,  
Welcome to the 2nd issue of the Harrow Woodcraft Times. We hope you enjoyed our 1st issue and we hope you will send in messages, articles and jokes to keep us all entertained and in touch. So far the feed back on whether a WhatsApp group is desirable is favourable but we would like those of you who haven't responded to get in touch please.

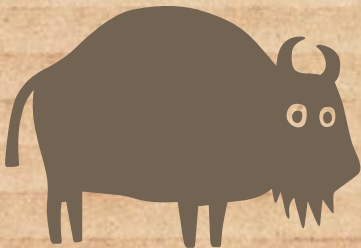


FEBRUARYS FULL MOON:  
*is called*  
**HUNGER OR SNOW MOON**

Yum!



(AUSSIE JOKE) WHAT'S THE DIFFERENCE BETWEEN A BUFFALO AND A BISON?



**YOU CAN'T WASH YOUR  
FACE IN A BUFFALO!**

Thank you for the joke Richard Mcallister!  
(Keep them coming!)



Woodcraft Folk



*Keeping going*





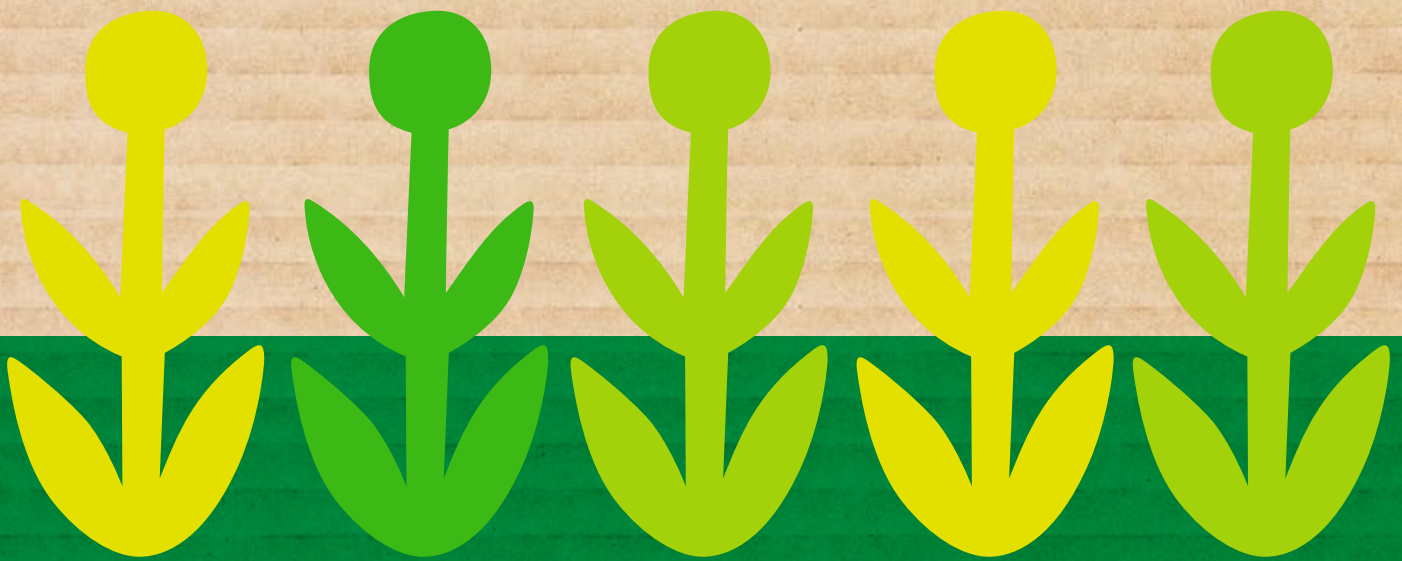
# AIMS AND PRINCIPLES

## ONE WORLD

### EDUCATING OUR MEMBERS ON ENVIRONMENTAL & SOCIAL SUSTAINABILITY

**NEWS: Climate Change:** In early March Folk members from Manchester, Leeds, Bradford, Leicester and Wales attended a series of practical training sessions at the Coop Group Headquarters in Manchester.

The session was facilitated by Miles Hudson of the Perimeter Institute who helped the members to explore melting ice caps, rising sea levels and warming air temperature. Using tea lights, ice cubes, rocks, water and balloons they were able to recreate the power of extreme weather. Thus underlining the need to reduce the World's carbon emissions.



WHAT DID THE DOG  
SAY WHEN HE SAT  
ON SANDPAPER?



RUFF!  
RUFF!  
RUFF!

(GET IT!)

Woodcraft Folk



*Even more!*





# WHERE IT ALL BEGAN

## HISTORY OF THE HARROW WOODCRAFT FOLK.Pt2



The years rolled on and with them the groups of the Watling Thing grew in members and experience. Regular weekend camps and summer camps were run on a 'shoe string'. These were the years of the Great Depression when it was a mark of relative affluence to attend the Mass Camp of 1933 at Symonds Yat, Herefordshire or the Paris International Camp of 1935. The Lone Pine Fellowship on financial grounds attended neither of these camps.



By 1937 the menace of Fascism from Italy, Germany and Japan had spread to Spain whose people were engaged in a life and death struggle with Franco and his German allies. The Woodcraft Folk in Harrow and Watford were deeply involved at this time in various activities, such as collecting money for milk for the Spanish children and aiding child refugees from Fascism.

In 1937 the Woodcraft Folk held a great International Camp at Rottingdean and it was here that the local Woodcrafters made their first contact with Red Falcons from other lands, especially those from France, Austria and Czechoslovakia. It was a glorious camp but those who were old enough, realised why no German Red Falcons were present, in those uncertain times.



Early in 1939 the Nazis occupied the whole of Czechoslovakia and the Czech Red Falcon movement assisted in the evacuation of their Jewish members. Badger and Heather took in an eleven year old girl, Lia, who became a part of their family and a member of the Lone Pine Fellowship.



*the fun never stops!*





TRANSFORM A  
PIECE OF PAPER  
INTO A CRANE!

*Take*

# THE CRANE CHALLENGE!

Click on the Crane  
OR SEARCH **ORIGAMI: CRANE TUTORIAL** ON YOUTUBE

Send in photos of your efforts to  
[harrowwoodcraftfolk@yahoo.co.uk](mailto:harrowwoodcraftfolk@yahoo.co.uk)  
or post to FB group [harrowwoodcraftfolk](#)



## WhatsApp Group

One way of ensuring everyone is kept informed would be a WhatsApp Group for parents and members. Is this a good idea? Let us know what you think.

Editor: John Woolf

Email: [johnwoolf9@gmail.com](mailto:johnwoolf9@gmail.com)  
[harrowwoodcraftfolk.btck.co.uk](http://harrowwoodcraftfolk.btck.co.uk)